

NAVAL AMMUNITION DEPOT BANGOR, BREMERTON, WASHINGTON

In the collection of the
U.S. Naval Undersea Museum

NUM.2000.026.001



NAVAL

AMMUNITION DEPOT

BANGOR

Navy-DPPO 13ND Brem., Wn.



BREMERTON, WASHINGTON

13ND-P-149

2000.026.001



FOREWORD

This Brochure was designed to bring you the story of Naval Ammunition Depot Bangor.

It is dedicated to the purpose of promoting a better understanding of the Depot and how it functions as a "Service to the Fleet."

Bruce D. Kelley

B. D. KELLEY
Captain, USN
Commanding Officer



MAIN ENTRANCE NAVAL AMMUNITION DEPOT
BANGOR HEADQUARTERS

TABLE OF CONTENTS

I. GEOGRAPHICAL LOCATION	4
II. MISSION	6
III. HISTORY	7
IV. ORGANIZATION	10
V. FACILITIES	22
VI. EQUIPMENT	26
VII. PERSONNEL	28
VIII. THE PUGET SOUND AREA	30
IX. TRAVEL INFORMATION	33

GEOGRAPHICAL LOCATION

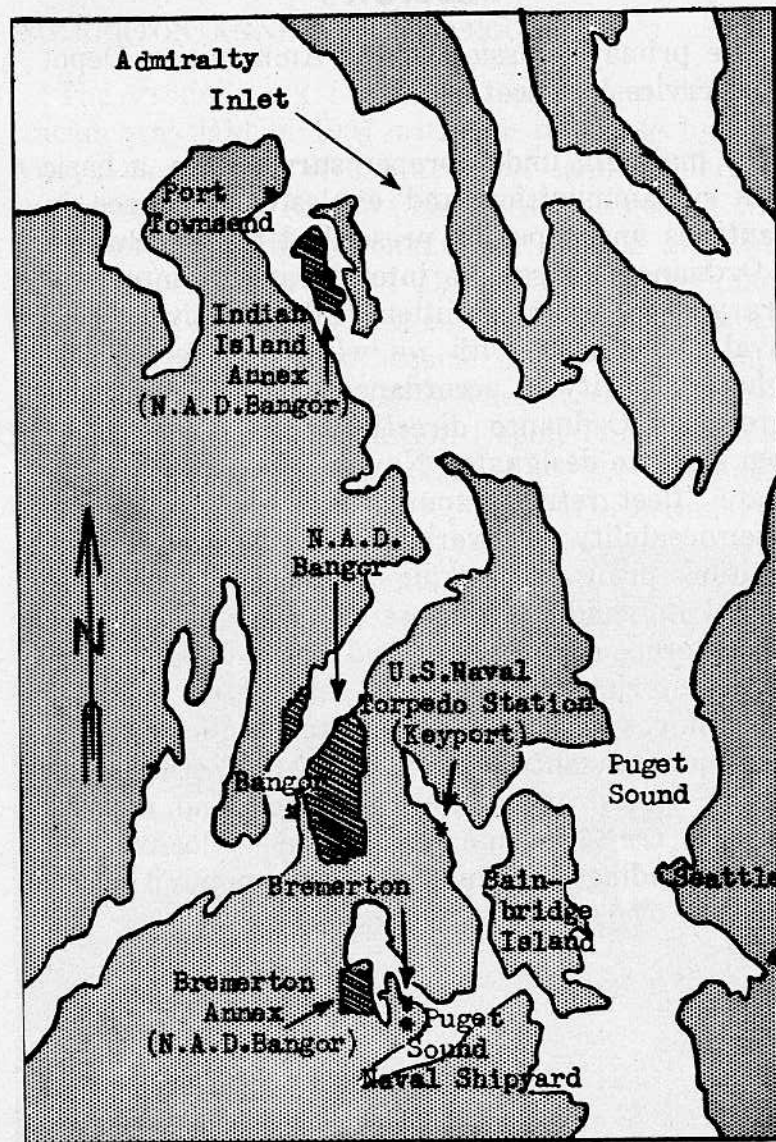
Naval Ammunition Depot Bangor, Bremerton, Washington, is comprised of three Ordnance Units at separate physical location: Headquarters NAD Bangor, Bremerton Annex NAD Bangor, and Indian Island Annex NAD Bangor.

Bangor, the Command and Headquarters Station, is located on the East side of Hood Canal approximately 13 miles North of West of Bremerton, Washington, and the Puget Sound Naval Shipyard. It covers a land area of some 6919 acres in Kitsap County and 768 acres in Jefferson County.

Bremerton Annex NAD Bangor is located on Ostrich Bay 3 miles North and West of Bremerton, Washington, and 10 miles South and East of the Command Headquarters Station. This unit of the Ammunition Depot has an approximate land area of 442 acres.

Indian Island Annex NAD Bangor, is in Jefferson County 33 miles from the Command Station at Bangor. The Island is North of Bangor and is accessible by highway via ferry across Hood Canal, and Bridge across Portage Canal from the Jefferson County mainland. The area of Indian Island plus the adjacent Navy Housing Project on the mainland totals 2723 acres.

The area contained in NAD Bangor and its annexa totals approximately 10,853 acres.



VICINITY MAP

MISSION

The primary mission of the Ammunition Depot is to service the fleet.

To maintain under proper surveillance, a basic stock of ammunition and explosive ordnance in quantities and types as prescribed by the Bureau of Ordnance; to receive into storage or into temporary storage, ammunition and explosives from Naval Commands with or without reference to higher authority in accordance with the approved Bureau of Ordnance directives. To make issues from stock to designated Naval Commands; to segregate "fleet return" ammunition and classify as to serviceability; to overhaul certain types of ammunition prior to making issues to designated Naval Commands; to dispose of unserviceable and/or dangerous ammunition and explosives or ordnance material when received from other sources by burning or dumping at sea; to conduct surveillance, quality control surveillance and other routine or special tests of ammunition and components; to tranship ammunition and explosive ordnance including army and airforce ammunition to and from overseas destinations.

HISTORY

BREMERTON ANNEX, NAD BANGOR

The groundwork for the establishment of this station was laid in 1904 with the purchase by the Navy Department of 255 acres of land bordering on Ostrich Bay in Kitsap County, Washington. Construction of buildings commenced in 1908 and the first Officer reported 14 December 1908 to take charge. The station as first established was a Naval Magazine and did not become a Naval Ammunition Depot until 1 July 1916 when it was commissioned U. S. Naval Ammunition Depot, Puget Sound. In 1928 the station was enlarged by the purchase of 187 acres of land bordering its North boundary.



MAIN GATE, BREMERTON ANNEX

On 1 July 1948 this station became a part of Naval Ammunition Depot Bangor with the title designation of Bremerton Annex, U. S. Naval Ammunition Depot Bangor, Bremerton, Washington.

INDIAN ISLAND ANNEX, NAD BANGOR

Indian Island was acquired by the government in 1939 en toto and on 10 May 1941 was commissioned and designated U. S. Naval Magazine.



MAIN GATE, INDIAN ISLAND ANNEX

The Naval Net Depot was commissioned on 15 May 1941. On 22 June 1945 both activities were disestablished as separate activities and consolidated under one activity and designated U. S. Naval Magazine and Net Depot, Indian Island, Hadlock, Washington.

Effective 1 July 1948 the name was changed to Indian Island Annex, U. S. Naval Ammunition Depot Bangor, Hadlock, Washington, under an Officer in Charge, and was a subordinate unit of the Naval Ammunition Depot Bangor, Bremerton, Washington.

COMMAND STATION, NAD BANGOR

Prior to the construction of Naval facilities at Bangor on Hood Canal during the last 6 months of 1944, no Naval ammunition handling stations in the Puget Sound area had any rail connection. It was necessary when receiving ammunition by railroad car to bring them to the Naval Ammunition Depot, Puget Sound, and the Naval Magazine at Indian Island by lighter. Neither of the two Naval Stations had deep water docks where ammunition could be transferred from railroad cars to ship or vice versa.

The urgent need for increased facilities to handle ammunition shipments to the fleet became more acute as the war in the western Pacific intensified. After considering 5 or 6 other sites, a final decision was made in January, 1944, to establish a Naval Magazine at the present location on Hood Canal. The plans for this establishment included the construction of 43 miles of single track of railroad to connect with the mainline near Shelton; spurs from the Shelton Bangor line to the Puget Sound Naval Shipyard, and the Ammunition Depot, and a 2 berth, deep water, marginal wharf at the new activity.

ORGANIZATION

U. S. NAVAL BASE BREMERTON

The Naval Ammunition Depot Bangor is part of the U. S. Naval Base, Bremerton.

Other activities within the Naval Base are the Naval Hospital; Naval Barracks; Marine Barracks; Naval Torpedo Station, Keyport; Naval De-gaussing Station, Kingston; and Harbor Defense Unit, Port Townsend.

NAVAL AMMUNITION DEPOT BANGOR

The Commanding Officer of U. S. Naval Ammunition Depot Bangor is the line officer ordered by the Navy Department to command the Depot and its annexa. His title is Commanding Officer, U. S. Naval Ammunition Depot Bangor. As Commanding Officer, he exercises entire control over every part of the Depot and has full authority over all persons employed by or attached to the Depot. To aid in the discharge of his responsibilities for the administration of all activities within the Depot, he has the following principal assistants:

Military

- Executive Officer
- Administrative Officer
- Mine and Net Officer
- Ordnance Officer
- Ordnance Material Handling Officer

- Inspection Officer
- Public Works Officer
- Safety Officer
- Comptroller
- Medical Officer
- Marine Guard Detachment Officer

Civilian

- Foreman, Ordnanceman
- Foreman, Public Works
- Chief Quarterman Public Works
- Quarterman, Public Works
- Chief Quarterman, Ordnanceman
- Quarterman, Ordnanceman
- Technical Director, Quality Evaluation Lab
- Administrative Assistant
- Director of Industrial Relations
- Senior Ammunition Inspector
- Senior Fire Chief
- Safety Engineer
- Administrative Division Supervisor, Supply
- Management Engineer
- Ordnance Engineer
- Training Director

DEPARTMENTAL FUNCTIONS

ADMINISTRATIVE DEPARTMENT

The Administrative Department handles all security matters including fire protection, issuing badges and passes, intelligence, and security of ships and other craft at the Depot.

Other responsibilities include administrative details of the Depot including records management, communications, central files, registered publications, duplicating services, mail service, and travel.

COMPROLLER DEPARTMENT

This department provides guidance and instructions for the preparation of the budget, recommends the allocation of funds to programs within the command, and initiates action to adjust financial plans to available funds. This department also provides all echelons of management with periodic financial reports and special statistical data required.

SAFETY DEPARTMENT

Conducts a continuing accident prevention program, serves as Labor Department representative in matters concerning compensation for injury, and advises in matters concerning licensing of vehicle and material handling equipment operators.

This department places special emphasis on developing explosive techniques for highly hazardous areas.

MANAGEMENT ENGINEERING DEPARTMENT

Analyzes, evaluates and correlates program requirement for facilities, equipment, and manpower and recommends to the Commanding Officer management concepts and plans for current operation. Administers the station Management Improvement Program, Work Simplification Program, Work Measurement Program, and Records Management Program.

PUBLIC WORKS DEPARTMENT

The Engineering Division is responsible for the design of proposed public works facilities including alterations, modifications, repairs, and improvements.

The Transportation division directs the repairs and operations of automotive, construction, weight handling, fire fighting and railroad equipment.

The Maintenance and Operations branch maintains all mechanical devices, buildings, electrical equipment, and roads and grounds. In addition, this branch manufactures pallets, boxes and cases, and performs shoring operation in connection with the shipment of ammunition.

SUPPLY DEPARTMENT

The control Division processes procurement, receipt and issue documents, maintains stock records, and schedules the issue of material.

The Material Division receives, stores, issues, classifies, inspects, and arranges for shipment and delivery of material.

The Inventory Division conducts inventories as necessary to maintain accurate stock records.

MEDICAL DEPARTMENT

Provides medical treatment for military personnel and emergency treatment for military dependents, provides emergency care for civilian employees and conducts an industrial health inspection and education program.

INDUSTRIAL RELATIONS DEPARTMENT

Employment Division responsibilities concern all aspects of employment processes including recruiting, placement, personnel transactions, and wage-job analysis.

Employment Relations-Services Division is concerned with disciplinary review, hearings, employee grievances, housing, transportation, performance ratings, employee councils and the depot newspaper (Bangor Triangle). Welfare services, incentive awards, and employee counselling are also responsibilities of this division.

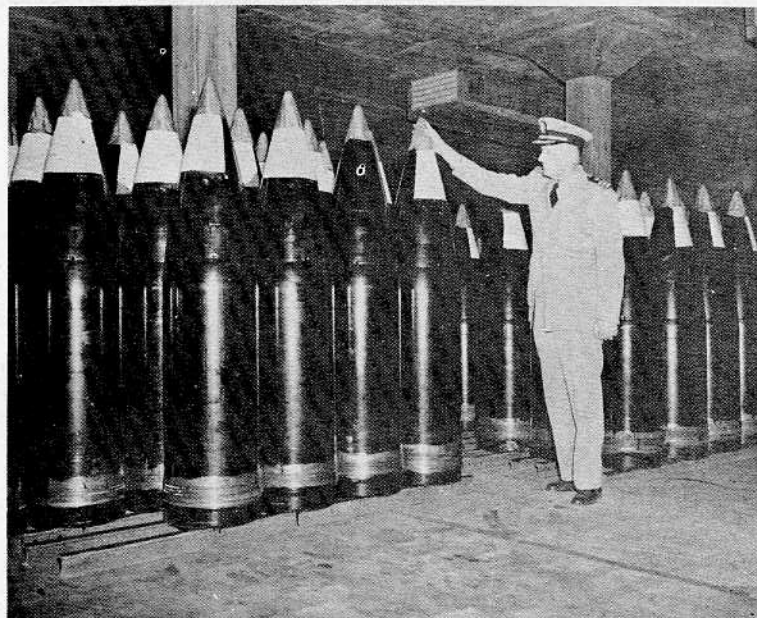
Training Division is responsible for organizing, developing, and operating the Employee Development Program for civilian employees and assisting and advising in training of military.

ORDNANCE DEPARTMENT

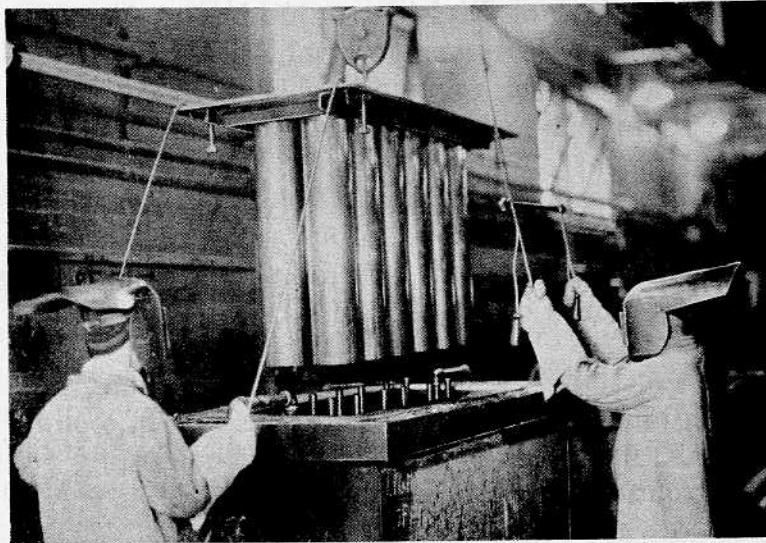
Stock Control Division maintains an ammunition stock control system involving stock recording, space control, ammunition inventories, receiving, issuing and all traffic matters pertaining to the shipment of ammunition.

Planning Division functions relate to the procurement of components, scheduling work and maintaining records of production jobs.

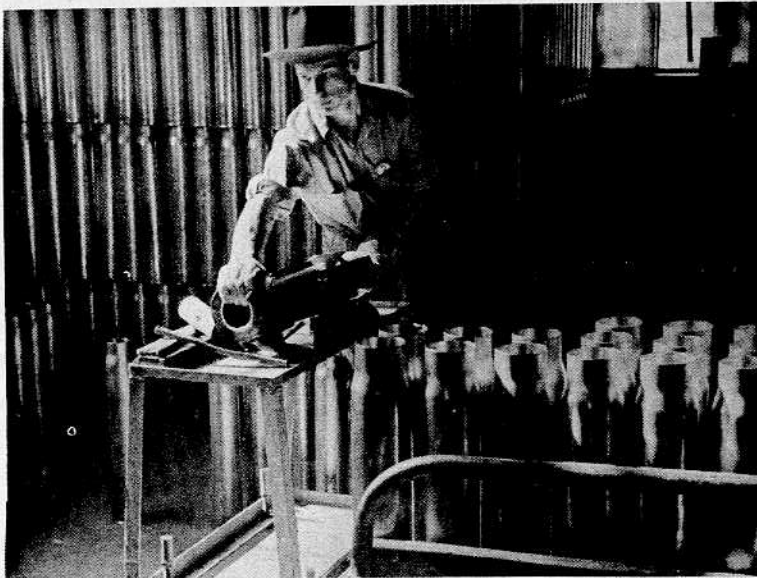
Production Division deals with inspection, renovation and preparation of gun ammunition, bombs, rockets, and depth charges, and reconditioning and preservation of inert components.



A MAJOR CALIBER PROJECTILE STOW

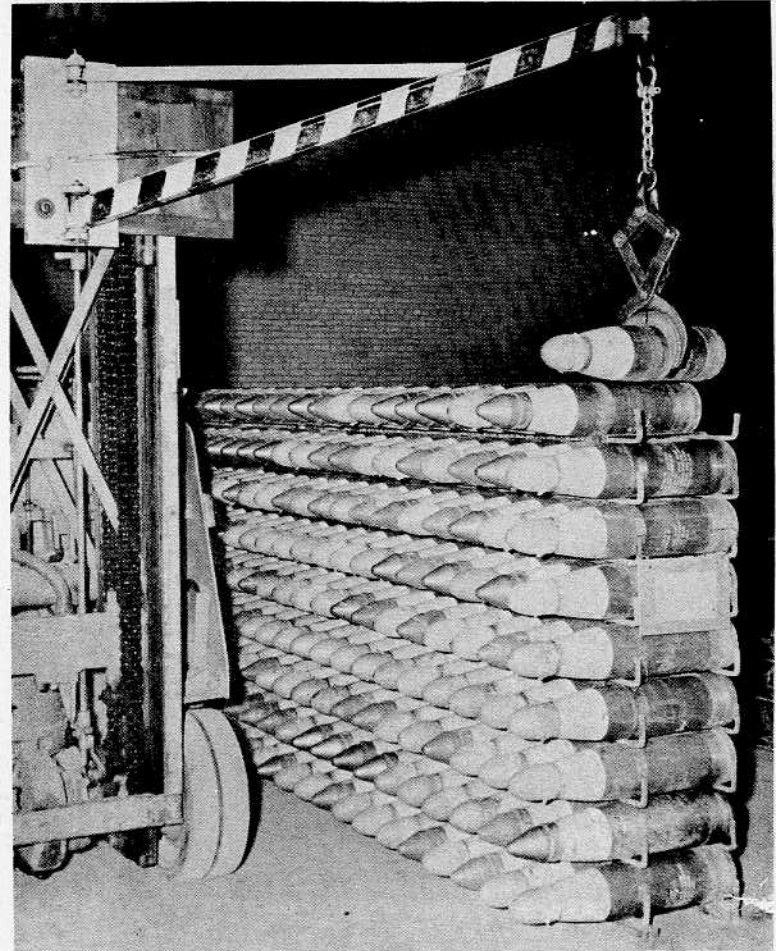


RECONDITIONING BRASS CARTRIDGE CASES



CARTRIDGE CASE GAUGING

Material Handling Division is concerned with receiving, shipping, segregating, stowing, and maintaining of ammunition in storage.



MEDIUM CALIBER PROJECTILE HANDLING

INSPECTION DEPARTMENT

Investigates, tests, evaluates, and reports performance characteristics and quality level of all types of munitions and other ordnance mechanisms. Defines or recommends serviceability status of ammunition, proposes design changes, and determines appropriate overhaul or modification action required to render serviceable the station stocks of over-age ammunition.



INSPECTION OF CARTRIDGE CASE SEGMENT

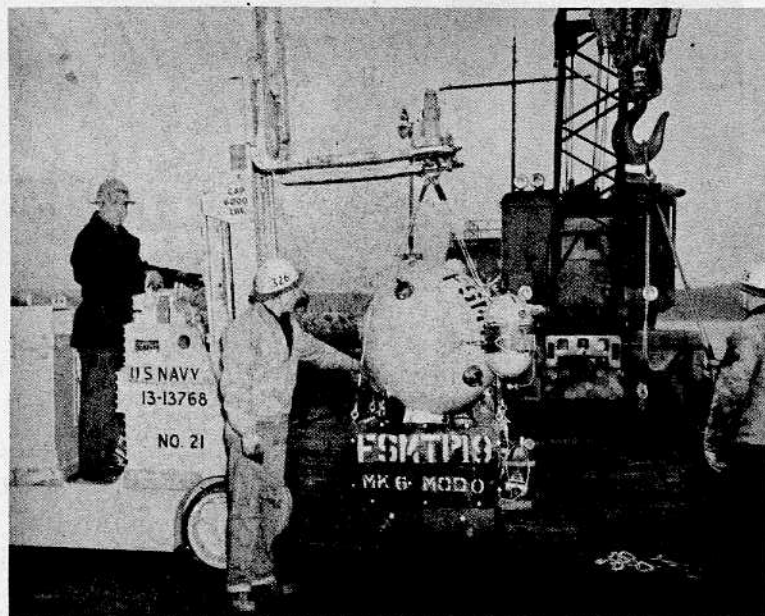


BREAKDOWN AND INSPECTION OF FUZE COMPONENTS

The Quality Evaluation Laboratory provides important investigative and analytical services for the Bureau of Ordnance and further maintains a continuing check on the operability and serviceability of all munitions in its area of responsibility. According to its mission, its function is to "devise, design, and apply methods, procedures and equipment to determine by laboratory examination and tests, functioning tests, statistical studies, or other means, the quality, stability, operability, or other criteria of munitions as defined in the individually assigned tasks, in order to support the continuing program of the Bureau of Ordnance for overall quality evaluation of naval munitions."

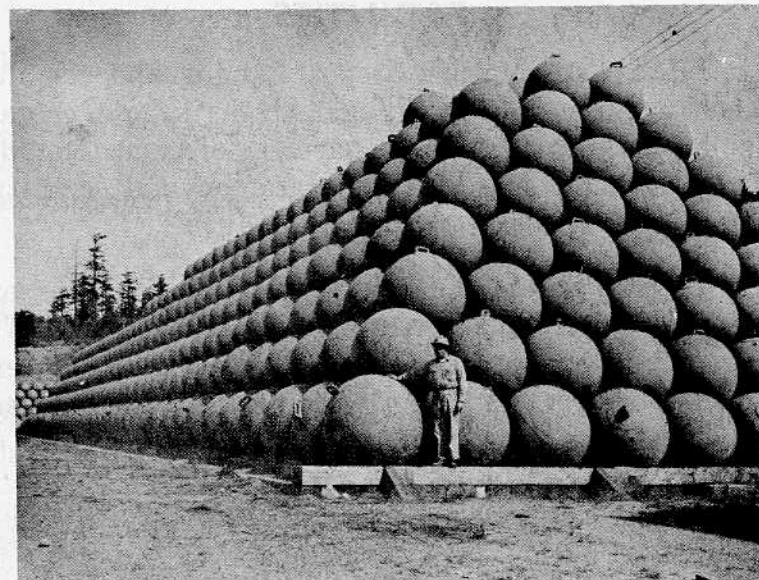
MINE AND NET DEPARTMENT

Mine Division duties include loading for shipment and unloading, segregating, preserving, storing, and overhauling or modifying of mines and associated equipment.

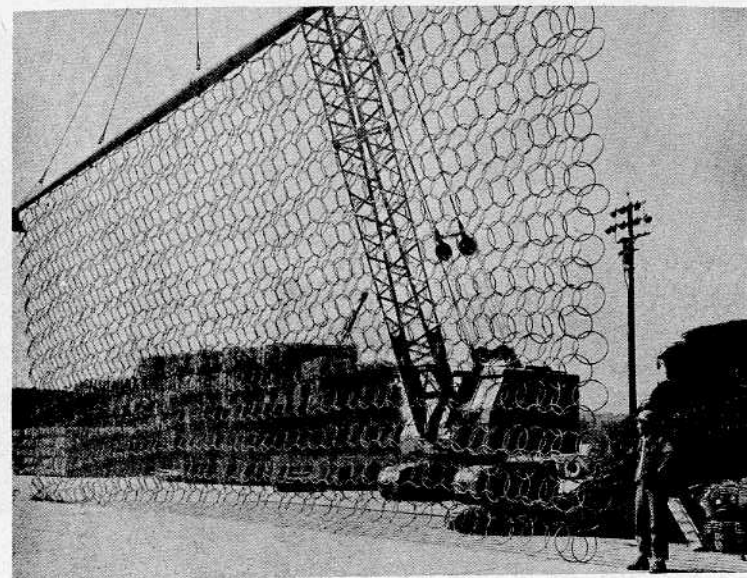


HANDLING AN UNDERWATER MOORED MINE

The Net Division manufactures, modifies and overhauls submarine and torpedo nets. Segregates, sandblasts, tests, paints, preserves, and stows floats and buoys.



UNDERWATER BARRIER NET FLOATS

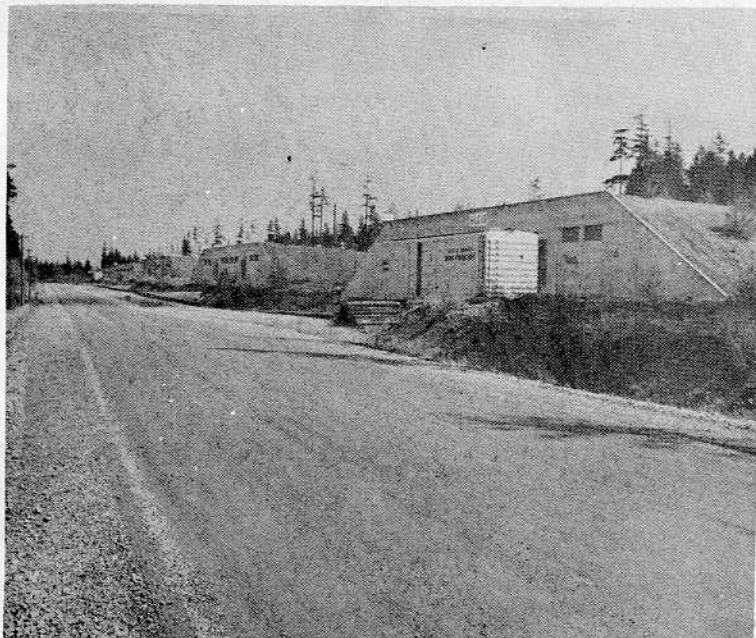


A SECTION OF ANTI-TORPEDO NET

FACILITIES

Naval Ammunition Depot Bangor and its annexa contains 557 buildings which include magazines, industrial shops, quarters, ordnance buildings, storage buildings, laboratories, and security buildings.

In addition to the approximate 10,853 acres of land, Bangor has approximately 7,080 acres of off shore anchorage available in Puget Sound. Water depths range from 30 to 300 feet at mean lower low water.



A SECTION OF A GUN AMMUNITION MAGAZINE GROUP

HOUSING:

Bachelor officers' quarters are available at Bremerton and Indian Island Annexa. (Not in use at present.)

Married officers' quarters are located on all three stations.

Quarters for certain civilian maintenance personnel are provided on Bremerton and Indian Island Annexa.

A twenty unit, low cost housing project located at Hadlock, Washington, is under the cognizance of the Indian Island Annex.

TRAINING FACILITIES:

Facilities for training of civilian and military personnel are provided on all three stations. Modern training aids and equipment are available for use with training programs.

MISCELLANEOUS FACILITIES:

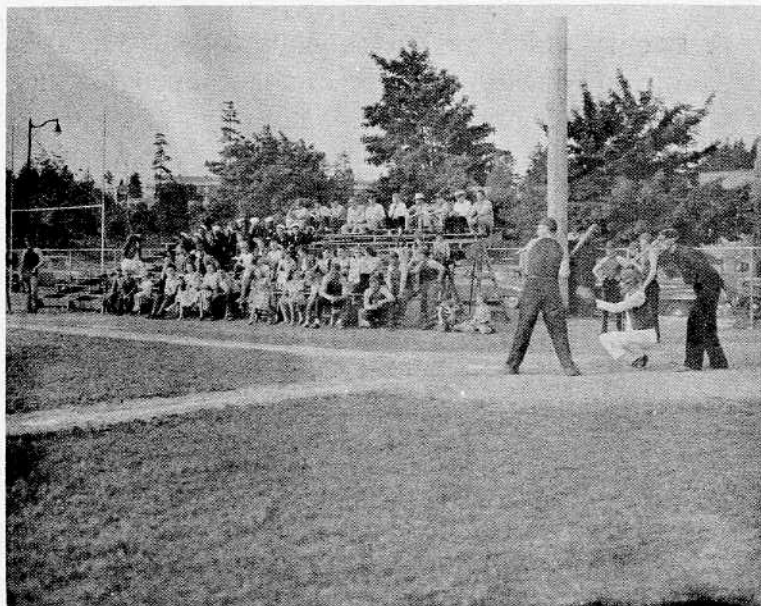
A 25 ton capacity marine railway is located at Bangor Headquarters.

Rail car ferry landings are located at Bremerton Annex and Indian Island Annex. They make possible the transporting of rail cars from and to Seattle by water.

RECREATION FACILITIES:

Outdoor facilities include ball diamonds, athletic fields, tennis courts, handball court, volley ball court, pistol range, trap ranges, picnic and swimming facilities, and fresh and salt water fishing facilities.

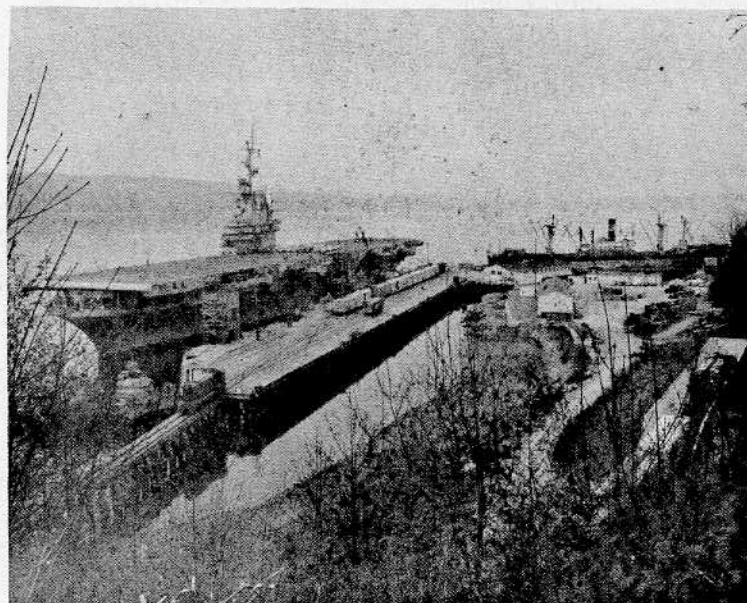
Indoor recreation is provided in gymnasiums equipped for indoor sports, bowling alleys, movie theaters, recreation rooms and libraries.



BERTHING:

A permanent marginal wharf is located at Bangor Headquarters. The 1370 feet of wharf length having a water depth at mean low of 45 feet will accommodate any navy ship or commercial vessel.

Wharfs located at the two annexa bring the total berthing space to 5170 lineal feet.



AN ESSEX TYPE CARRIER AND VICTORY SHIP AT WHARF

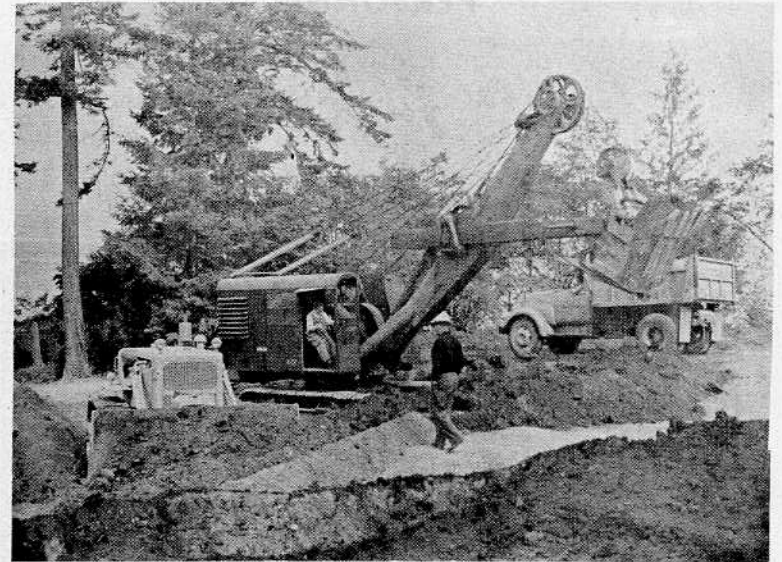
EQUIPMENT

A great variety and quantity of equipment is required in order to operate and maintain the Depot. A total of approximately 800 pieces of the following types of equipment are on hand:

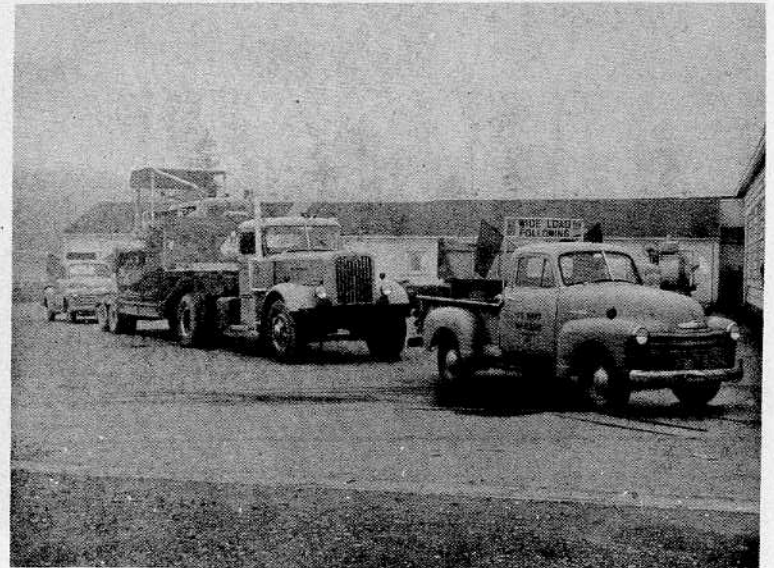
Passenger Vehicles
Motor Trucks and Trailers
Mobile Fire Apparatus
Ambulances
Tug Boats
Motorized Lighter
Rolling Stock
Special Equipment



VEHICLES USED BY THE TRANSPORTATION DIVISION



CONSTRUCTION EQUIPMENT AT WORK



EQUIPMENT LOADED FOR TRANSPORTING

PERSONNEL

U. S. Naval Ammunition Depot Bangor maintains a complement of approximately 1000 civilian and military personnel. In addition approximately 100 marines are assigned to the depot for the purpose of security. During times of war or similar national emergency this number would necessarily increase very rapidly because of the speed with which munitions must be handled. Therefore, it is necessary that personnel be highly skilled and that many possess supervisory potential, since they are the nucleus around which an expanded force would be built in such an emergency.

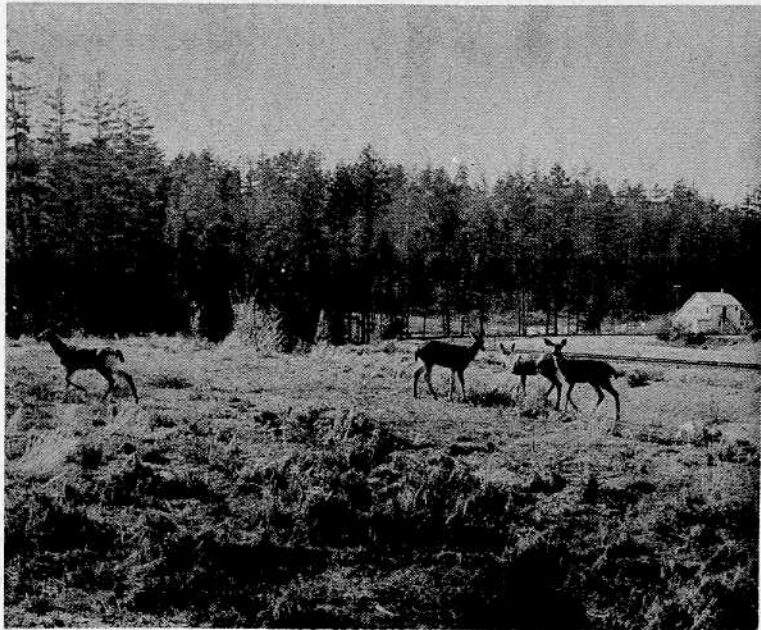


ALL HANDS ASSIST IN AMMUNITION LOADING OPERATION

When large ships are being loaded or unloaded at the wharf, it is necessary to utilize all available personnel in order to accomplish the work in the scheduled time. At these times when "all hands turn to" one of the most commendable qualities of depot employees becomes apparent—that is the spirit of cooperation that prevails, regardless of the type or place of work. This willingness to "all pitch in and get the job done" has been largely responsible for the establishing of an enviable record for speed and low cost of ship loading and unloading at the depot.

THE PUGET SOUND AREA

Puget Sound, being located in the northwestern corner of the United States is cooled in summer by the breezes from the Pacific Ocean and warmed in the winter by the ocean currents. Because of this climate, Naval Ammunition Depot Bangor employees and attached military personnel enjoy a wide variety of outdoor activities throughout the entire year.



DEER GRAZING ON THE DEPOT

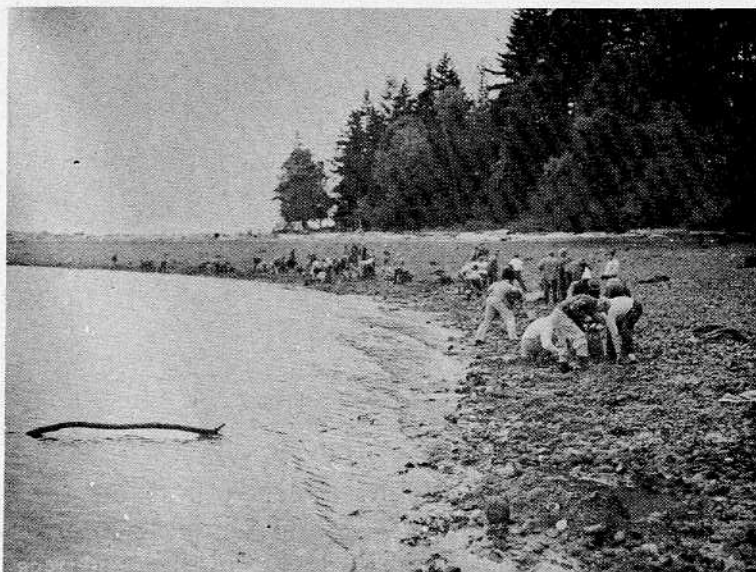
Good salt and fresh water fishing can be found in the immediate vicinity of the Depot. Waterfowl and upland bird hunting areas are also close at hand. Of particular interest to sportsmen is the hunting for deer and elk during late fall and winter.



Unexcelled skiing facilities are found on the slopes of the nearby Cascade and Olympic mountains. The ski season extends from November through May.



THE CATCH FROM A SALMON FISHING DERBY



A CLAM DIGGING PARTY ON A PUGET SOUND BEACH

TRAVEL INFORMATION

LOCATION: BANGOR HEADQUARTERS

Fifteen miles north of Bremerton.

TELEPHONE:

PSNS ESsex 3-5011 Ext. 0521.

HOUSING FOR OFFICIAL VISITORS:

BOQ's are available at NTS Keyport (4 miles east) and at PSNS (15 miles south). Rooms in Bremerton. Depot will make reservations upon request.

MESSING FOR OFFICIAL VISITORS:

BOQ's have messing facilities and a Marine Corps mess is located on the station. Restaurants in Silverdale (3 miles south).

RAIL PASSENGER SERVICE:

NP and GN (via Minneapolis) and UP (via Omaha) serve Seattle from East. SP serves Seattle (via San Francisco) from South.

PLANE PASSENGER SERVICE:

UAL serves Seattle from East (via Chicago) and South (via San Francisco). Western Airlines serves Seattle from South (via Los Angeles, San Francisco, Portland). Northwest serves Seattle (via Minneapolis).

BUS SERVICE:

Greyhound serves Bremerton (15 miles south of NAD Bangor) from East (via Seattle) and South (via Tacoma).

LOCAL TRANSPORTATION TO ACTIVITY:

Visitors arriving by plane or train in Seattle must proceed to the Seattle-Bremerton Ferry Dock for transportation across Puget Sound to Bremerton. Bus service provided by Greyhound comes directly to Bremerton. Upon receiving information as to time of ferry or bus arrival Bremerton, Depot vehicles will meet visitors at the Bremerton ferry dock or bus terminal for further transportation.

MISCELLANEOUS:

Visitors are advised that the Seattle-Tacoma Airport is located 15 miles south of Seattle and is serviced by airline limousines direct to the Olympic Hotel in downtown Seattle. Taxi service is recommended to the ferry terminal from the Olympic Hotel or the Train Depots.

